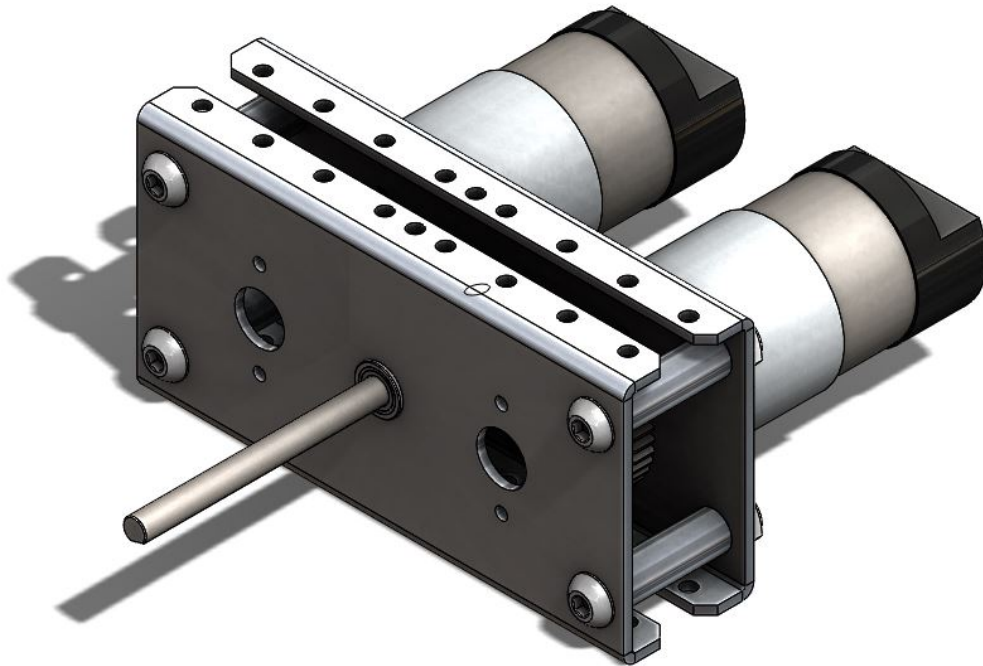


User Guide

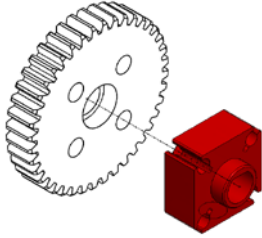
PicoBox Twin Turbo



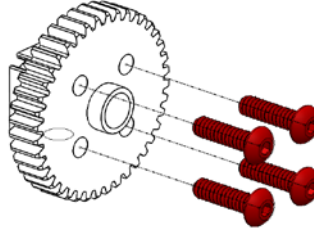
PicoBox Twin Turbo (am-3450)

Gear Assembly (QTY 1)

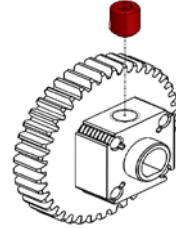
Step 1: Install a 6mm D-Bore Double Boss Nub (am-3215) on a 40T gear (am-3407)



Step 2: Use four 6-32 x 0.500" long Button Head Screws (am-1418.)



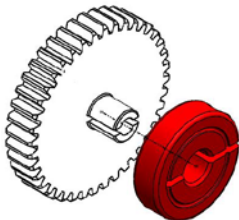
Step 3: Thread a 10-32 Set Screw (am-1342) partially into the nub.



1X

Pinion Assembly (QTY 2)

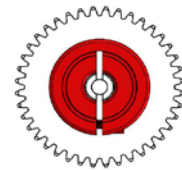
Step 1: Install a 6mm Collar Clamp (am-3473) on a 40T NeverRest Pinion (am-3202).



Step 2: Be sure to insert the boss of the gear into the cavity of the collar clamp.

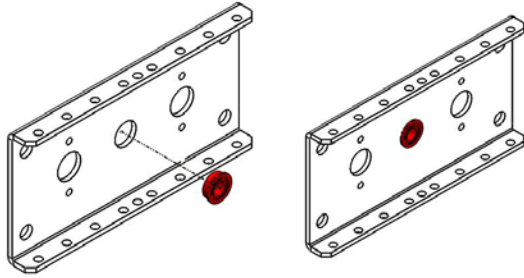


Step 3: Make sure the slot on the gear boss lines up with the slot on the collar clamp.



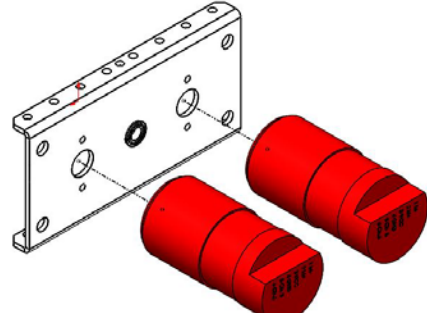
2X

Step 1: Press a 6x12x4 Flanged Bearing (am-3377) into the center 12mm hole of a PicoBox Twin Turbo gearbox plate (am-3439).

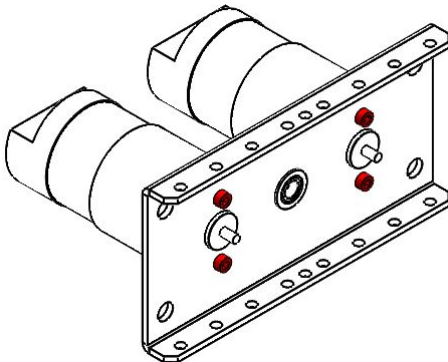


NOTE: Make sure the flange of the bearing is flush against the sheet metal of the gearbox plate.

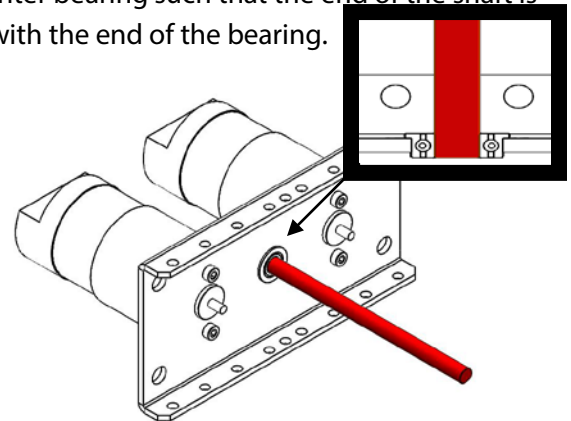
Step 2: Insert a NeveRest motor into the remaining 12mm holes of the PicoBox Twin Turbo gearbox plate, opposite of the flanges on the gearbox, and line up the threaded holes on the end of the motor with the bolt-circle holes of the gearbox plate.



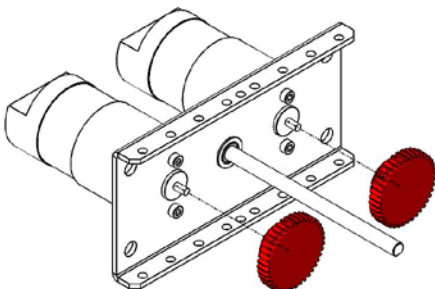
Step 3: Install six M3-0.5 x 6mm long socket head screws (am-1254) in each NeveRest motor to secure it to the gearbox plate.



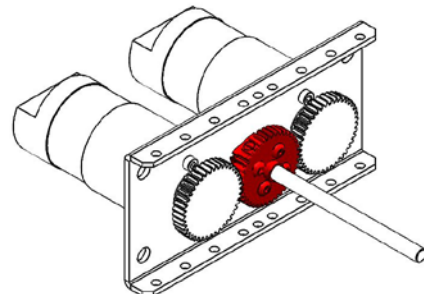
Step 4: Install the 6mm D-Shaft (am-3226-100) into the center bearing such that the end of the shaft is flush with the end of the bearing.



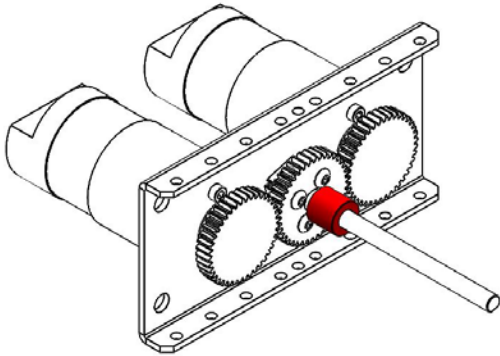
Step 5: Install two Pinion Assembly onto the NeveRest Motor shaft. Be sure to place the boss of the Gear against the motor. Tighten the #10-32 set screw to lock the Pinion Assembly in place.



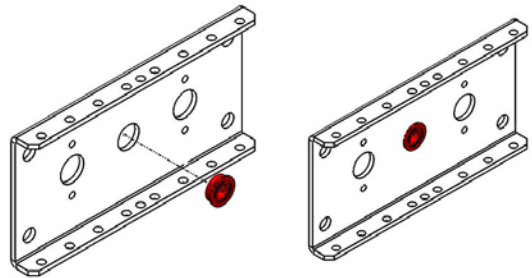
Step 6: Install a Gear Assembly onto the axle such that all of the gears in the Gear Assemblies are lined up. Tighten the #10-32 Set screws to lock all the gear assemblies in place.



Step 7: Install the Aluminum Spacer (am-3481) on the center axle up against the previously installed bearing.

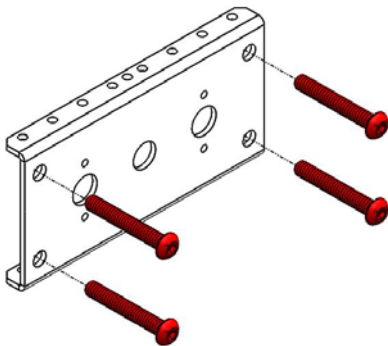


Step 8: Press a 6x12x4 Flanged Bearing (am-3377) into the center 12mm hole of a PicoBox Twin Turbo gearbox plate (am-3439).

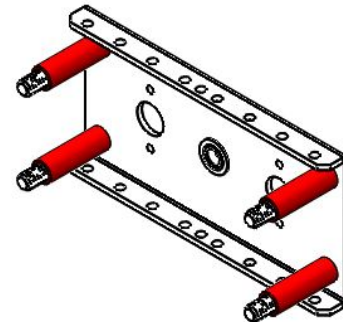


NOTE: Make sure the flange of the bearing is flush against the sheet metal of the gearbox plate.

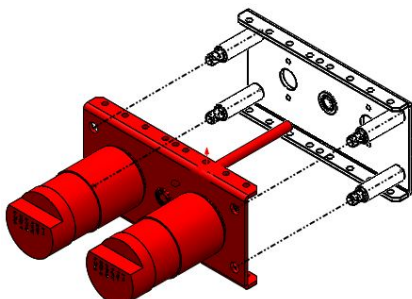
Step 9: Insert four 1/4-20 x 1.75" Button Head Screws (am-1420) into the side of the PicoBox Twin Turbo gearbox plate without the flange



Step 10: Place a PicoBox Spacer (am-3406) over all four 1/4-20 screws on the side of the PicoBox Twin Turbo gearbox plate with the flanges.



Step 11: Insert the Axle of the Gearbox Assembly into the bearing on the PicoBox Twin Turbo gearbox plate. Align the four 1/4-20 screws with the 1/4" holes on the PicoBox Twin Turbo gearbox plate is up against the Picobox Spacers.



Step 12: Secure with four 1/4-20 Nylock Jam Nuts (am-1102)

